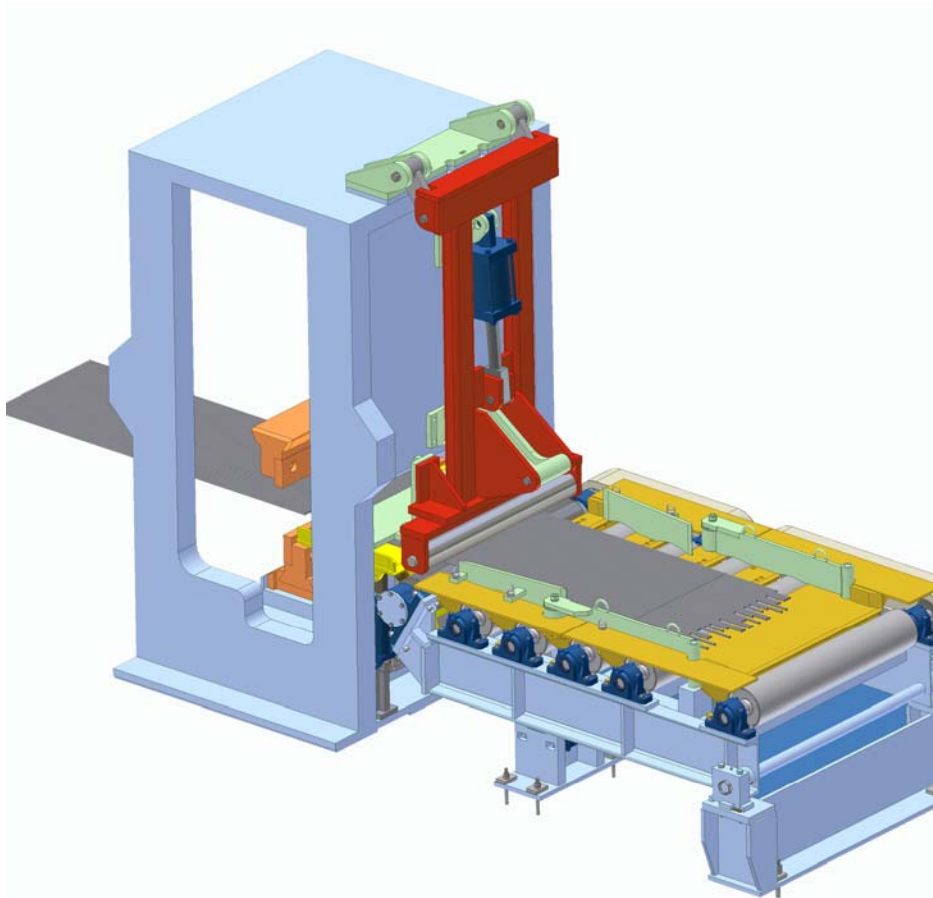
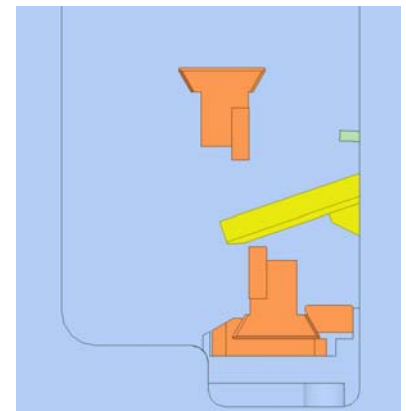


Cold Shear Crop Handling System effectively handles tail crops

Cold shear tail crop handling has always been a problem because the short tail crop **pieces can get stuck on the shear blade** as they pass over the blade. An extra operator is often required to push the bars manually over the blade and down the crop chute. This results in a safety issue, extra labor cost and lost production time.



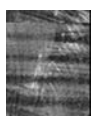
Quad has developed a solution to this problem that can be **retrofitted** to an existing shear. A crop flipper is used to throw the bars over the shear blade. This eliminates the chance of the short bar getting caught on the blade and staying on the shear entry table.



The savings in operating time can be significant. A savings of only 10 seconds to handle tail crops on a mill where a drag of steel off the bed is processed every 2 minutes. translates into **8% more production time**.

With the crop flipper handling system, an operator on the floor is no longer required, resulting in a **savings of one shear helper** per shift.

The **safety issue** of having an operator reach into the shear bite area is eliminated.

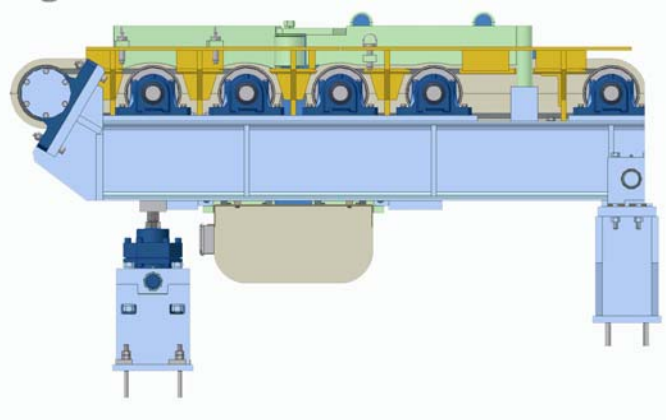


QUAD
ENGINEERING

75 Scarsdale Road, Toronto, ON, Canada M3B 2R2
Tel: 416-391-3755 Fax: 416-391-3645
www.QuadEng.com

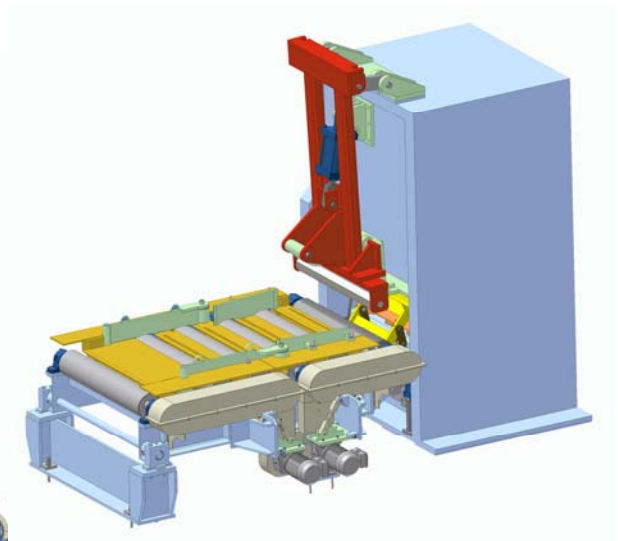
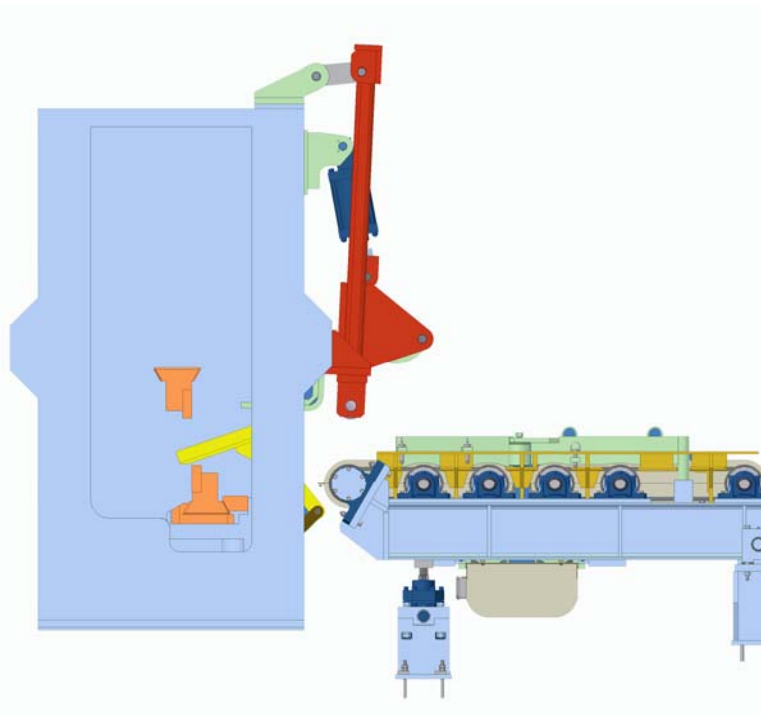
Cold Shear Crop Handling System effectively handles tail crops

The crop handling system includes a **humping entry table** that **lifts the bars off the shear blade** when the drag is advancing. This reduces rubbing on the blade surface which increases the life of the shear blade. This is very important when using shaped blades to cut rounds or structural shapes.



H
Humping table to lift bars off the shear blades

The short tail pieces reliably convey to the blades because of the short table roll center distance and the use of the gag hold down roll acting as a pinch roll on the last driven table roll.



Drive side view of entry table

Based on the existing equipment design, it may be possible to reuse or modify the gag hold down system.